



# SBHY-313-R-S/B



**Fits:** 2020-2022 Hyundai Palisade R Series Running Boards



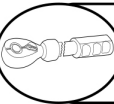
ALL TOOLS AND HARDWARE INCLUDED IN BOX



REMOVE CONTENTS FROM BOX. VERIFY ALL PARTS ARE PRESENT.



READ INSTRUCTIONS CAREFULLY BEFORE STARTING INSTALLATION.

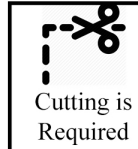


DO NOT OVER TORQUE. STANDARD OPERATING LOAD FOR TIGHTEN BODY MOUNT NUTS & BOLTS VARIES FROM **45** TO **65** FOOT POUND.

SCAN OUR READER FOR MANUAL



3HR



Cutting is Required



Drilling is not Required



INFO@BROADFEET.COM



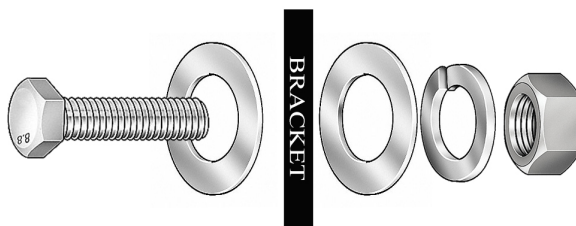
TEL: 718-302-1787

## STEP:1

Open up the box of brackets and hardware to make sure you have all the items listed below before you initiate the installation.

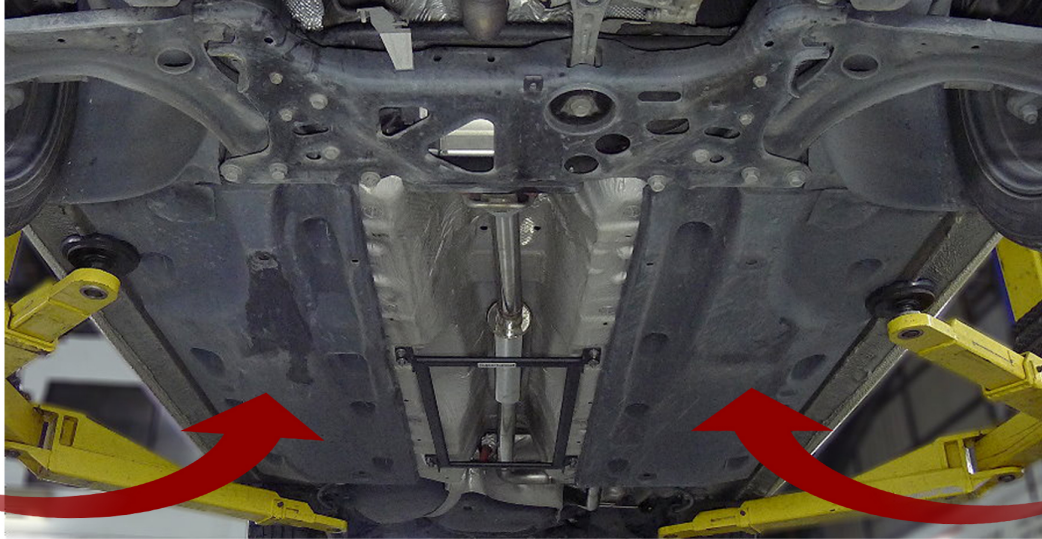


BOLT PATTERN FOR SUCCESSFUL INSTALLATION





Fits: 2020-2022 Hyundai Palisade R Series Running Boards



**STEP: 2**

Start by removing the splash guards under the car to uncover the chassis holes.

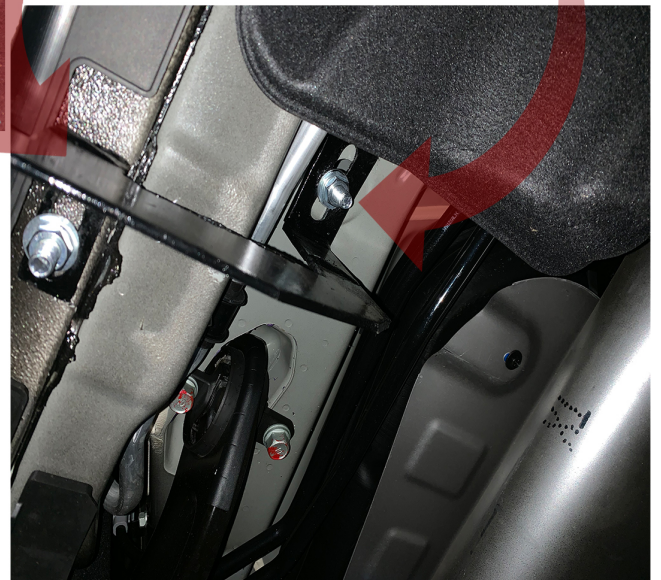


**STEP: 3**

The image to the left shows how the driver side front bracket is supposed to be installed.



**NOTE**  
Insert droppins



**STEP:4**

Follow the image on the right to install the rear bracket accordingly.





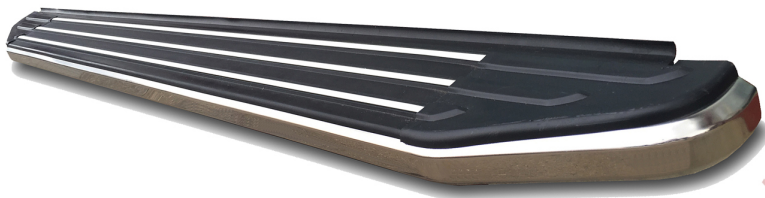
**Fits:** 2020-2022 Hyundai Palisade R Series Running Boards

**STEP:5**

Continue with the middle bracket just like how it appears on the image bellow.

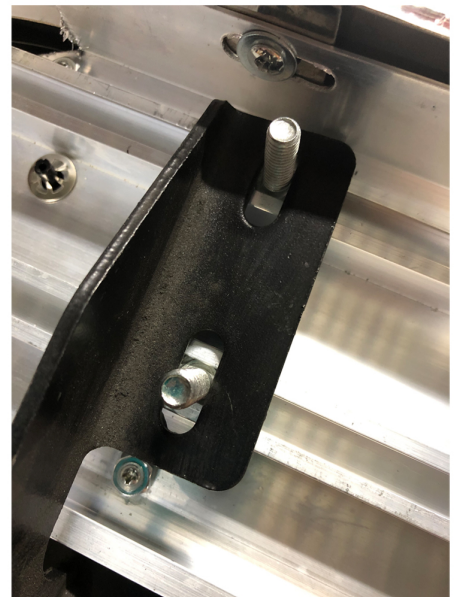


**NOTE**  
Insert droppins



**STEP: 6**

Once you have installed the front, middle and rear brackets, adjust the screws located under the board. Remove the nuts and sit the board on top to align it on right place.

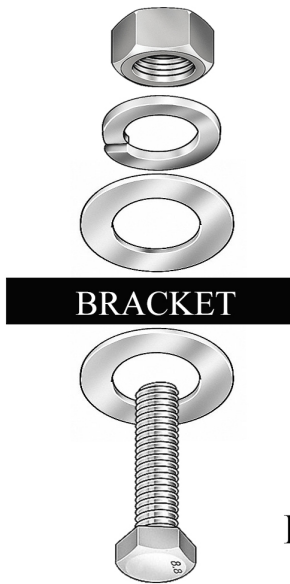






**Fits:** 2020-2022 Hyundai Palisade R Series Running Boards

PLACE THE  
RUNNING  
BOARDS ON  
TOP OF THE  
BRACKETS  
AND MOUNT  
AS SHOWN



PLEASE SCREW BRACKETS WITH BOLTS AS SHOWN IN THE DIAGRAM TO THE LEFT



R66 INSTALLS ONLY

FOR R66 LIGHTED RUNNING BOARD  
STEP 1: PLEASE FIND THE DOME LIGHT WIRE IN YOUR VEHICLE DOOR PANEL

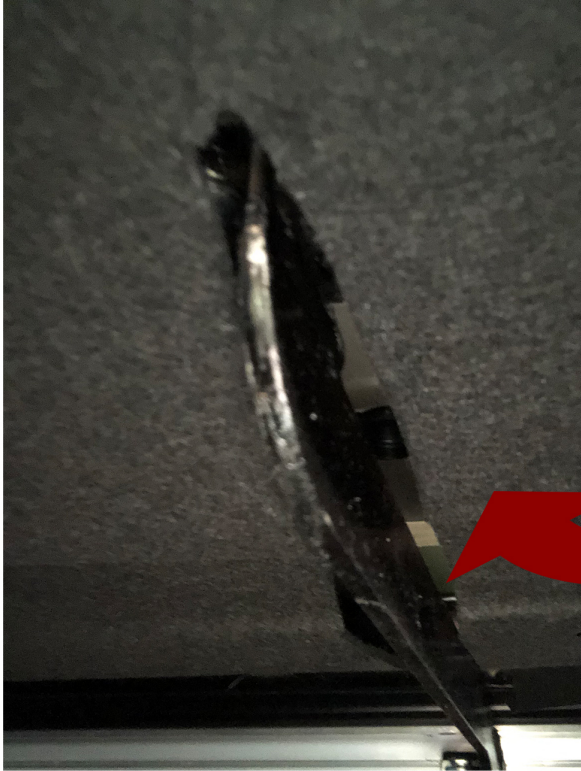
STEP 2: CONNECT POWER AND GROUND SUCCESSFULLY AND TEST TO MAKE SURE LIGHTS TURN ON PROPERLY







Fits: 2020-2022 Hyundai Palisade R Series Running Boards



**STEP: 7**

When you have finished installing the boards and all of the brackets are in place. Make sure everything is secured and fastened. install the splash guards back and cut it so that you are able to clear the brackets.

