



# SBGM-260-R



**Fits:** 2019-2021 CHEVY BLAZER RUNNING BOARDS MANUAL



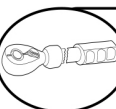
ALL TOOLS AND HARDWARE INCLUDED IN BOX



REMOVE CONTENTS FROM BOX. VERIFY ALL PARTS ARE PRESENT.



READ INSTRUCTIONS CAREFULLY BEFORE STARTING INSTALLATION.



DO NOT OVER TORQUE. STANDARD OPERATING LOAD FOR TIGHTEN BODY MOUNT NUTS & BOLTS VARIES FROM **45** TO **65** FOOT POUND.

SCAN OUR READER FOR MANUAL



1 HR



CUTTING NOT REQUIRED



DRILLING NOT REQUIRED



INFO@BROADFEET.COM



TEL: 718-302-1787

Hardware Included:

| NO. | NAME                      | QTY | Memo | NO. | NAME            | QTY | Memo |
|-----|---------------------------|-----|------|-----|-----------------|-----|------|
| ①   | RUNNING BOARD             | 2   |      | 5   | Drop pin T Bolt | 6   |      |
| ②   | Left Bracket              | 3   |      | 6   | Hexagon bolt    | 2   |      |
| ③   | Right Bracket             | 3   |      | 7   | Hexagon Nut     | 12  |      |
| ④   | L Support Bracket         | 2   |      | 8   | Spring washer   | 12  |      |
| ⑤   | U Bolt for middle bracket | 2   |      | 9   | Flat washer     | 14  |      |

### STEP 1:

PLEASE REMOVE THE BOTTOM SPLASH GUARDS ON BOTH SIDES OF THE VEHICLE SO YOU CAN SEE THE CHASSIS PROPERLY



Picture Shown with Driver Side Front Bracket



**DROP PINS/ T-BOLTS VARY BY SIZE**

IN SOME CASES, IT IS REQUIRED TO WEDGE INTO CHASSIS FOR PROPER FITMENT

MOUNT THE BRACKET USING THE SUPPLIED DROP PINS, PLEASE SLIDE THE DROP PINS INTO THE CHASSIS AND USE AS ANCHORS TO HOLD THE BRACKET UP TO THE CHASSIS



Picture Shown Driver Side Middle Bracket with U Bolt



# SBGM-260-R



Fits: 2019-2021 CHEVY BLAZER RUNNING BOARDS MANUAL

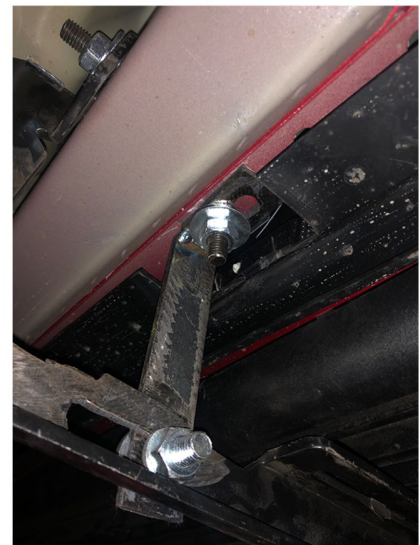
CONTINUE TO MOUNT  
THE DRIVER SIDE  
MIDDLE BRACKET WITH  
U-BOLT MOUNTING



Picture shown with Driver Side Middle bracket with U-Bolt mounting



Picture shown with Driver Side Front Bracket



SUPPORT BRACKET

FINISH THE DRIVER SIDE  
BY MOUNTING THE  
LAST REAR BRACKET  
WITH THE LAST  
DROP-PIN BOLT

REPEAT THE SAME  
PROCESS FOR THE  
PASSENGER SIDE



Picture shown with Driver Side Rear Bracket



Fits: 2019-2021 CHEVY BLAZER RUNNING BOARDS MANUAL

PLACE THE  
RUNNING  
BOARDS ON  
TOP OF THE  
BRACKETS  
AND MOUNT  
AS SHOWN



**BRACKET**



PLEASE SCREW BRACKETS WITH BOLTS AS SHOWN IN THE DIAGRAM TO THE LEFT



R66 INSTALLS ONLY

FOR R66 LIGHTED RUNNING BOARD  
STEP 1: PLEASE FIND THE DOME LIGHT WIRE IN YOUR VEHICLE DOOR PANEL

STEP 2: CONNECT POWER AND GROUND SUCCESSFULLY AND TEST TO MAKE SURE LIGHTS TURN ON PROPERLY

