



Fits: 2020-2022 FORD EXPLORER



ALL TOOLS AND HARDWARE INCLUDED IN BOX



REMOVE CONTENTS FROM BOX. VERIFY ALL PARTS ARE PRESENT.



READ INSTRUCTIONS CAREFULLY BEFORE STARTING INSTALLATION.

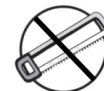


DO NOT OVER TORQUE. STANDARD OPERATING LOAD FOR TIGHTEN BODY MOUNT NUTS & BOLTS VARIES FROM **45** TO **65** FOOT POUND.

SCAN
OUR
READER
FOR
MANUAL



1 HR



CUTTING NOT
REQUIRED



DRILLING NOT
REQUIRED



INFO@BROADFEET.COM



TEL: 718-302-1787

- Please read this installation menu before installing this part.
- You may need to periodically to re-tighten all hardware for safety use after installation.
- Installation pictures are only for your reference, there might be some differences between pictures and real parts but no affect for your fitting.
- Remove all Under Chassis Plastic Shield to locate Chassis hole to bracket mounting
- Under carriage Splash guard need to be trimmed to mount with bracket.

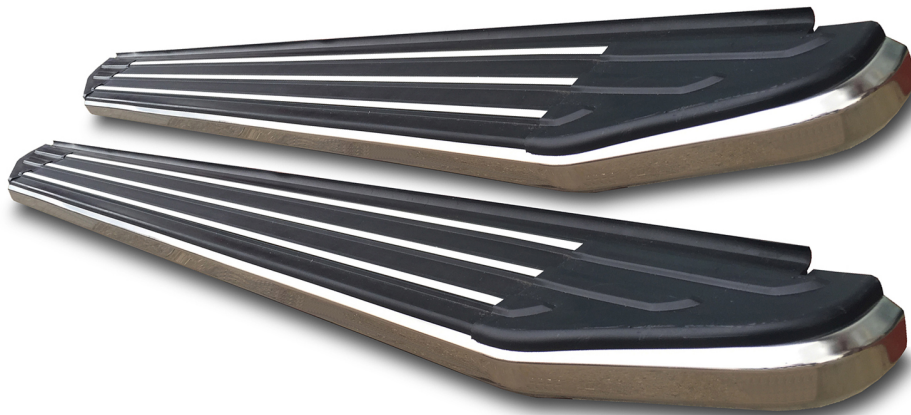
STEP 1:

Begin by opening the box of brackets and hardware. Make sure you have all these items listed below as shown in the picture.







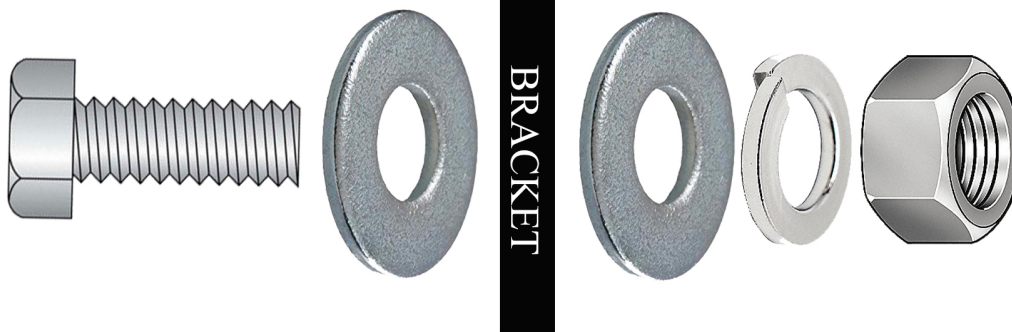


Fits: 2020-2022 FORD EXPLORER



RUNNING BOARDS

	Drop pins #12		Flat washers #12
	Spring washers #12		M8 Nut for droppin #12



BOLT PATTERN FOR SUCCESSFUL INSTALLATION



STEP 2:
Please remove the Factory Splash Guard if your vehicle comes equipped with one.

STEP 3:
Line bracket up to chassis as shown in the photo on the left.

Please use the drop-pins provided and slide them through the chassis to create an anchor for your bracket



Fits: 2020-2022 FORD EXPLORER



Middle bracket, Passenger Side



Picture shown with Rear Passenger side Bracket kit

STEP 4:

Follow the steps as shown in the pictures above for a successful installation. Once the brackets are all installed on right position, make sure bolts and nuts are fastened.



Fits: 2020-2022 FORD EXPLORER

Reminder



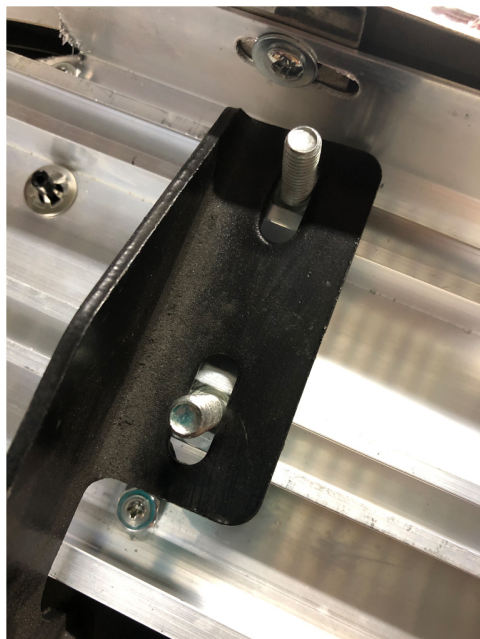
PLEASE TIGHTEN ALL BOLTS
TO THE BEST OF YOUR ABILITY

YOUR RUNNING BOARDS HAS BEEN SUCCESSFULLY
INSTALLED

PLEASE RE-INSTALL YOUR SPLASH GUARD AND
MODIFY WHAT YOU NEED TO MAKE SURE YOUR
BRACKETS FIT PROPERLY THROUGH THE SPLASH
GUARD.



PLACE THE
RUNNING
BOARDS ON
TOP OF THE
BRACKETS
AND MOUNT
AS SHOWN



BRACKET



PLEASE SCREW BRACKETS WITH BOLTS AS SHOWN IN THE DIAGRAM TO THE LEFT



R66 INSTALLS ONLY

FOR R66 LIGHTED RUNNING BOARD
STEP 1: PLEASE FIND THE DOME LIGHT WIRE IN YOUR VEHICLE DOOR PANEL

STEP 2: CONNECT POWER AND GROUND SUCCESSFULLY AND TEST TO MAKE SURE LIGHTS TURN ON PROPERLY

