



Fits: 2018-21 Toyota CH-R Rear Bumper Protector



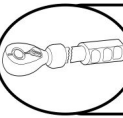
THIS APPLICATION APPLIES TO REAR BUMPER GUARD PINTLE STYLE ASWELL RSTO-725-68-S/B



REMOVE CONTENTS FROM BOX. VERIFY ALL PARTS ARE PRESENT.



READ INSTRUCTIONS CAREFULLY BEFORE STARTING INSTALLATION.



DO NOT OVER TORQUE. STANDARD OPERATING LOAD FOR TIGHTEN BODY MOUNT NUTS & BOLTS VARIES FROM **45** TO **65** FOOT POUND.

SCAN OUR READER FOR MANUAL



2HR



Cutting is not Required



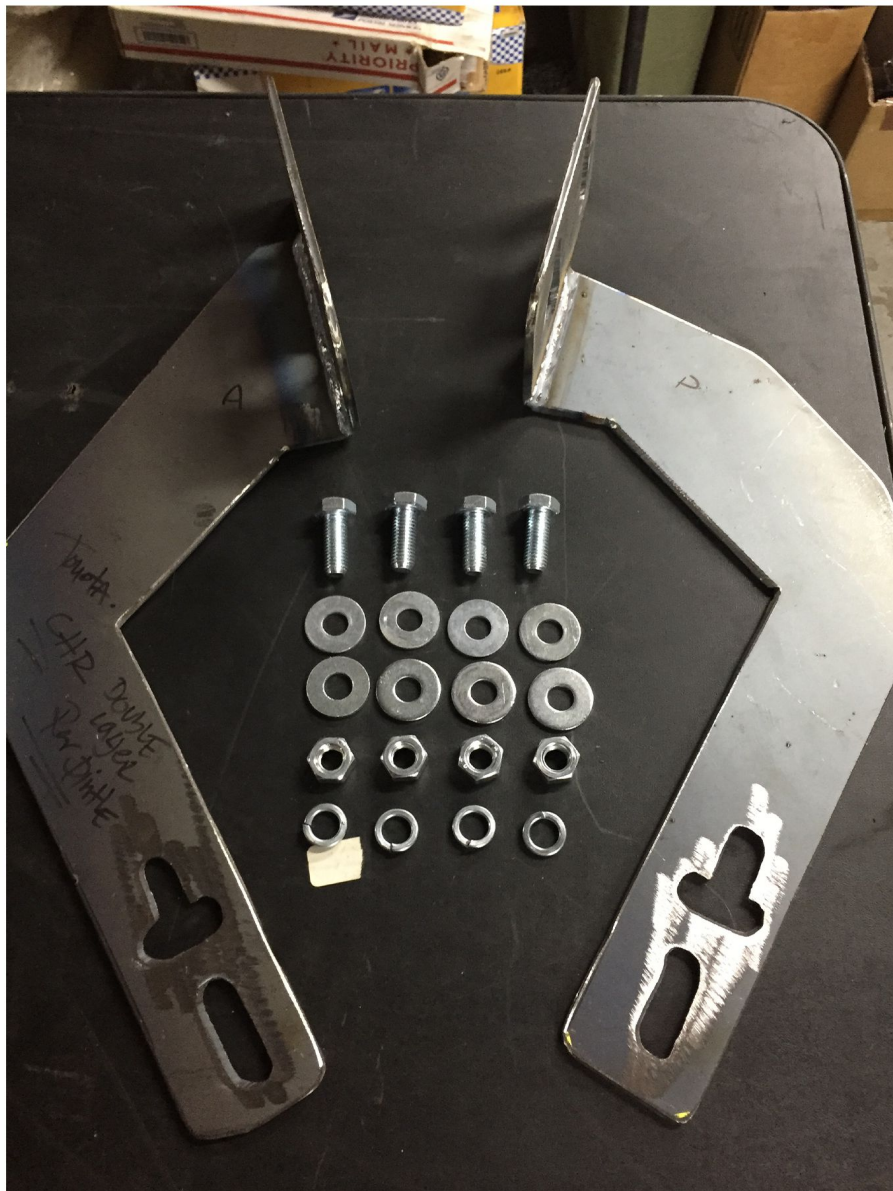
Drilling is Required



INFO@BROADFEET.COM



TEL: 718-302-1787

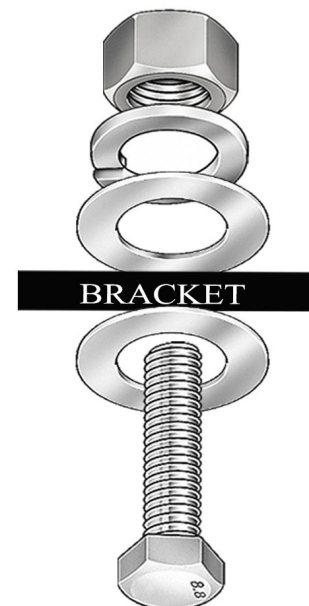


STEP 1:

Open up the box of brackets and hardware to make sure you have all the items listed below before you initiate the installation.

NOTE

Always refer to the Bolt Pattern at every step of the entire installation for a successful work.

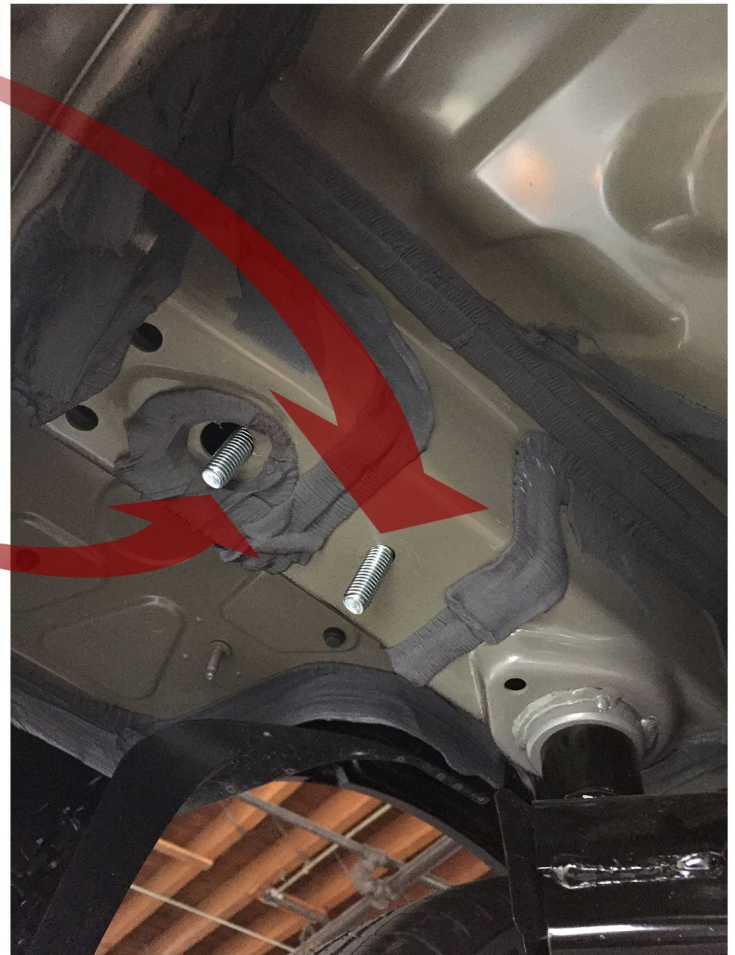
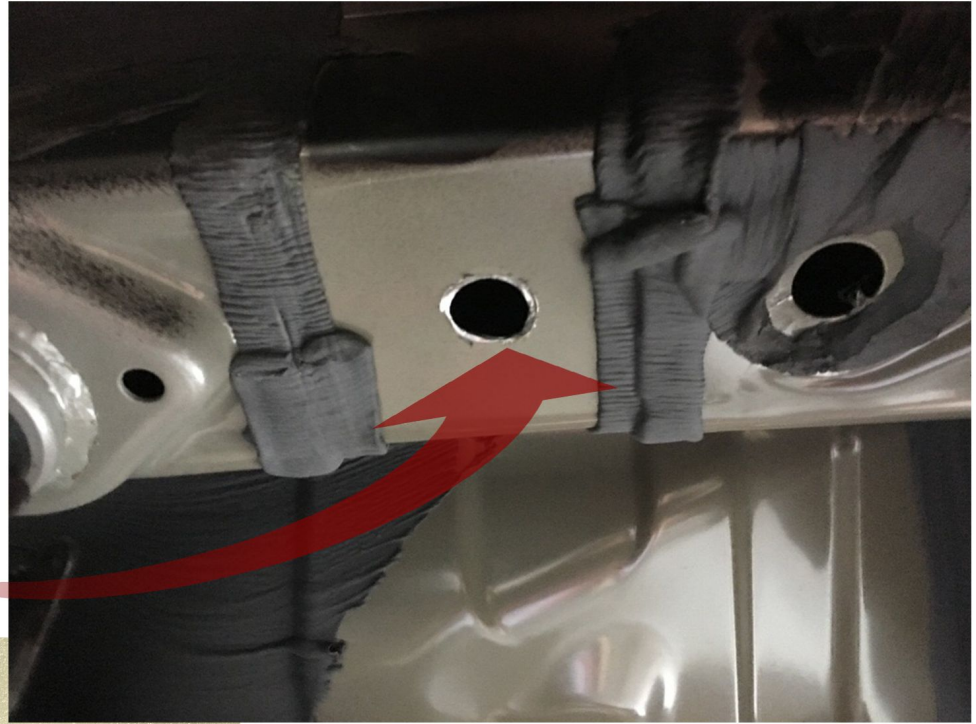




Fits: 2018-21 Toyota CH-R Rear Bumper Protector

STEP: 2

The picture on the right illustrates the chassis holes. They are too small and the droppins do not fit through. Notice that in order for you to fit the droppins it is necessary to drill to make the hole wider in both passenger and driver sides.



STEP: 3

Once you have drilled and made the chassis hole wider enough to fit the droppins through as shown in the images above and right. Install the brackets nup next.



Fits: 2018-21 Toyota CH-R Rear Bumper Protector

AT THIS POINT YOUR REAR BUMPER PROTECTOR SHOULD LOOK LIKE THIS WHEN INSTALLED SUCCESSFULLY. IF YOU HAVE ANY FURTHER CONCERN PLEASE CONTACT US AT THE NUMBER PROVIDED IN THE FIRST PAGE OR VISIT US AT BROADFEET.COM.

