



Fits: 2020-22 Mercedes Benz GLB Rear Double layer Bumper Protector



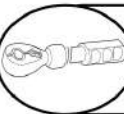
PROFESIONAL INSTALLATION IS HIGHLY RECOMMENDED!!!



REMOVE CONTENTS FROM BOX. VERIFY ALL PARTS ARE PRESENT.



READ INSTRUCTIONS CAREFULLY BEFORE STARTING INSTALLATION.

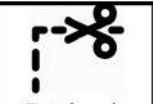


DO NOT OVER TORQUE. STANDARD OPERATING LOAD FOR TIGHTEN BODY MOUNT NUTS & BOLTS VARIES FROM **45** TO **65** FOOT POUND.

SCAN
OUR
READER
FOR
MANUAL



1HR



Cutting is
Required



Drilling is
not Required



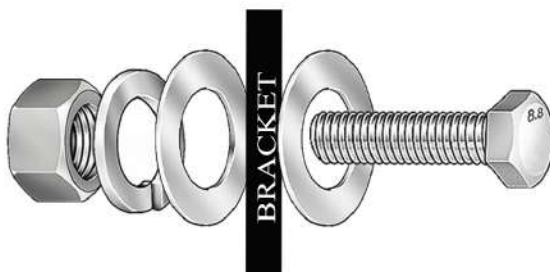
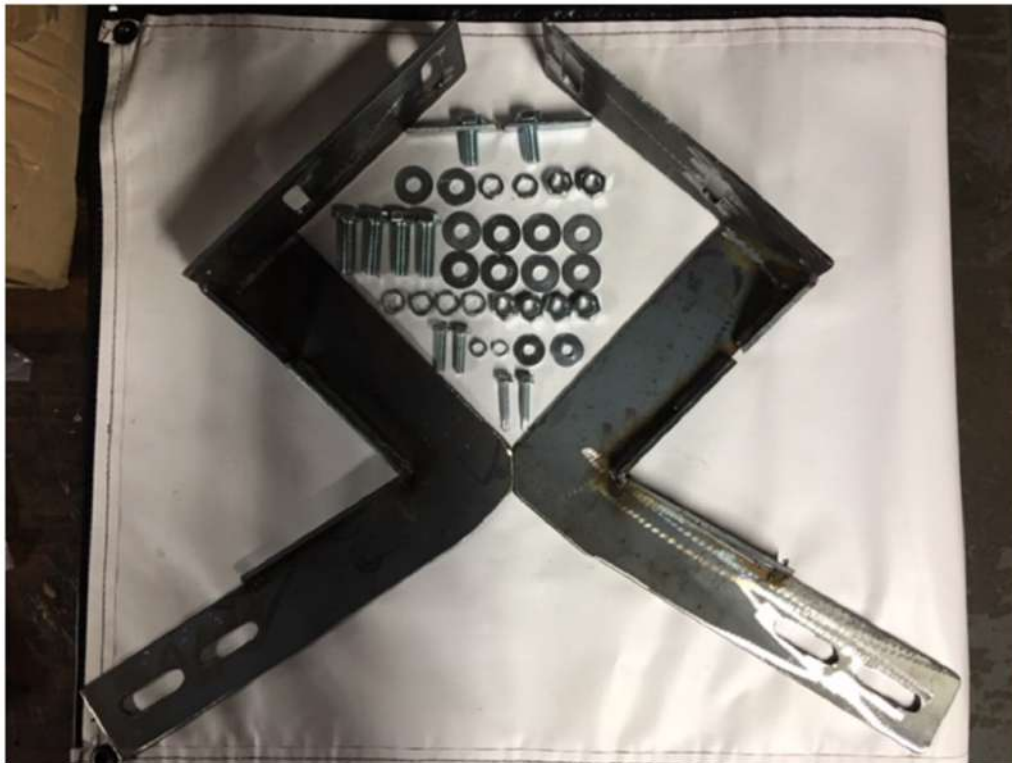
INFO@BROADFEET.COM



TEL: 718-302-1787

STEP 1:

Open up the box of brackets and hardware and make sure you have all the items listed below before you initiate the installation.



NOTE:

As a reminder. Always make sure to follow the bolt pattern at every step through the whole installation.

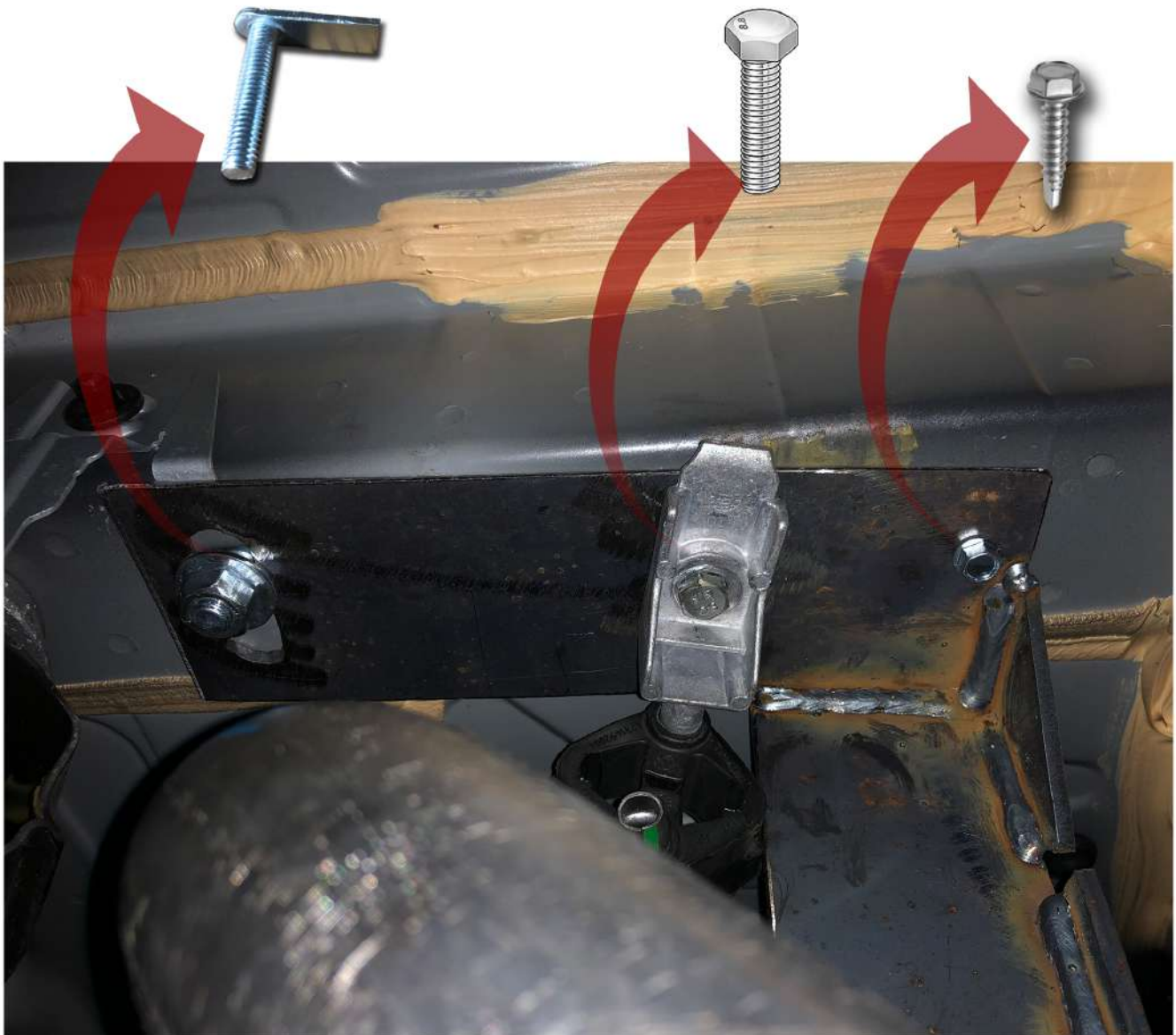


Fits: 2020-22 Mercedes Benz GLB Rear Double layer Bumper Protector



STEP 2:
If the car comes equipped with rear splash guards.
You must remove it to start installation.

STEP 3:
Remove both mufflers temporarily to begin
installation. Please follow the picture on the
left and on the below.



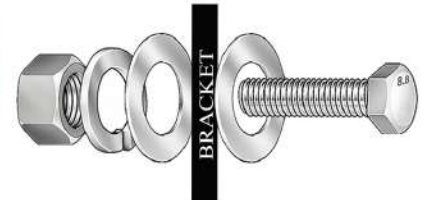
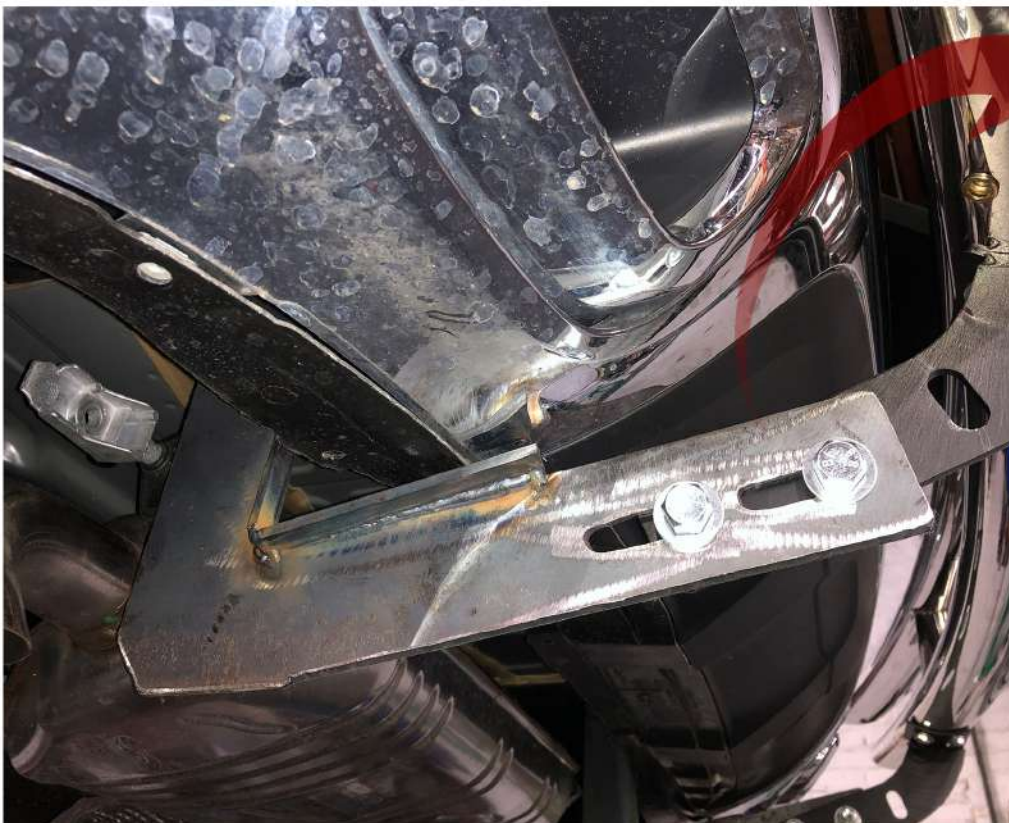


Fits: 2020-22 Mercedes Benz GLB Rear Double layer Bumper Protector



STEP 4:

Please follow the steps exactly as shown on the picture to the left. Notice that when you are installing the muffer back. You tighten the bolt right on top of the bracket and muffer thread all together.



STEP 5:

Now it is time to install The rear double layer bumper protector. Use the bolt pattern and line up bumper protector's legs to the brackets as shown in the image to the left.

STEP 6:

Repeat same procedure for both sides.



Fits: 2020-22 Mercedes Benz GLB Rear Double layer Bumper Protector

STEP 7:

At this point your rear Double Layer bumper protector should look like the one in the image below.
Please make sure that the bolts and screws are fastened for more security.

