



Fits: 2017-2021 Jeep Compass front A-bar Bumper Protector



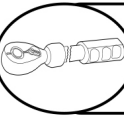
ALL TOOLS AND HARDWARE INCLUDED IN BOX



REMOVE CONTENTS FROM BOX. VERIFY ALL PARTS ARE PRESENT.



READ INSTRUCTIONS CAREFULLY BEFORE STARTING INSTALLATION.



DO NOT OVER TORQUE. STANDARD OPERATING LOAD FOR TIGHTEN BODY MOUNT NUTS & BOLTS VARIES FROM **45** TO **65** FOOT POUND.

SCAN OUR READER FOR MANUAL



1HR



Cutting is Required



Drilling is not Required



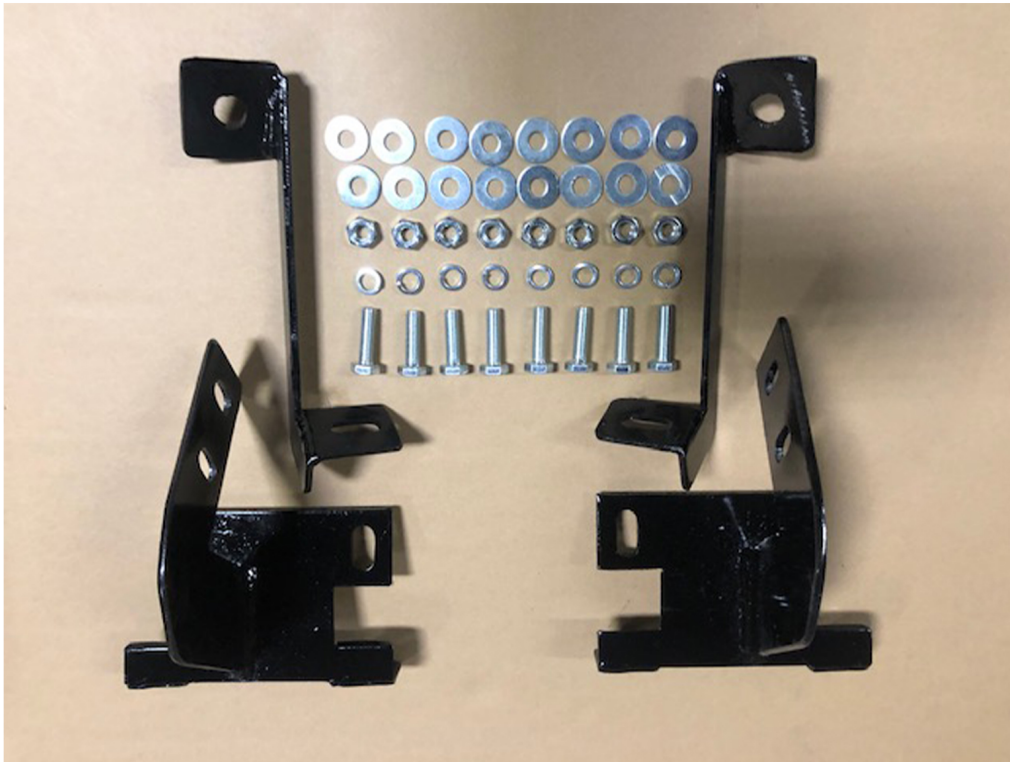
INFO@BROADFEET.COM



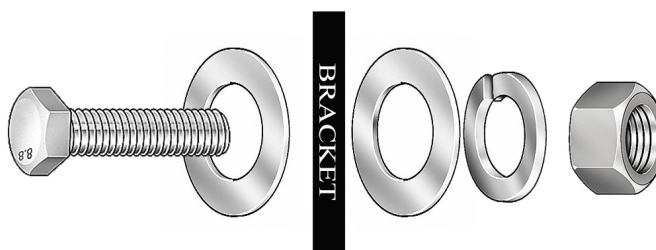
TEL: 718-302-1787

STEP 1:

Open up the box of brackets and hardware to make sure you have all the items listed below before you initiate the installation.



BOLT PATTERN FOR SUCCESSFUL INSTALLATION



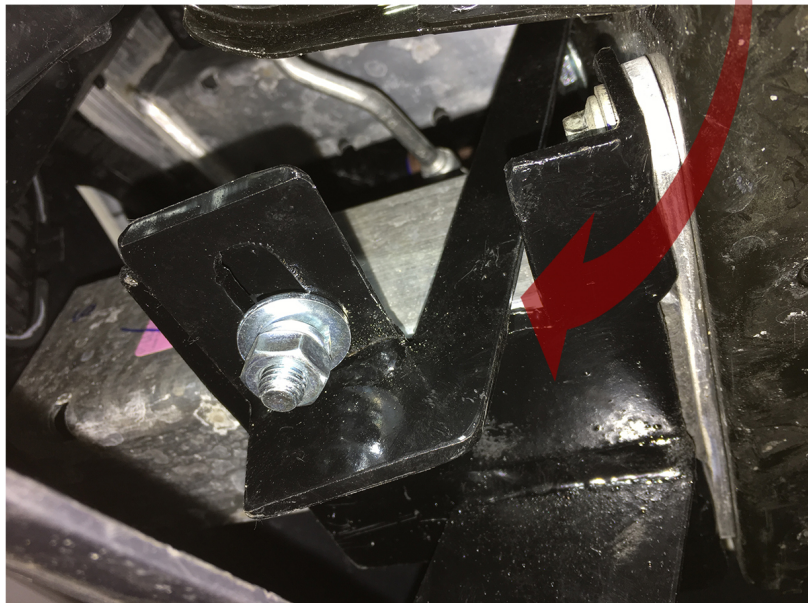


Fits: 2017-2021 Jeep Compass front A-bar Bumper Protector



STEP: 2

Always make sure you have the brackets present for the installation as it appears in the image to the left. If in any case that hardware and brackets are not listed, please contact the number on page 1 to request missing items.



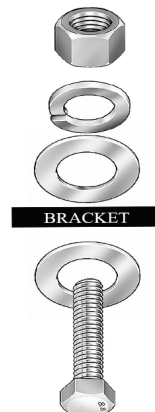
STEP: 3

Please follow instructions as shown in the image to the left. Locate the chassis hole and use support brackets.



STEP: 4

Continue by using the bolts pattern as shown in the image bellow.





Fits: 2017-2021 Jeep Compass front A-bar Bumper Protector



NOTE:4

Cutting is required at this point in order for the main bracket to clear its way out.

STEP: 5

Once the main brackets are successfully installed and fasten properly, move on to the last step. "The A-bar"

Do not forget the bolt pattern. Always make sure the legs of the A-bar and main brackets aline to eachother as shown in the image to the right.



STEP: 6

By now, your A-bar should look like the picture in the right. Be sure that your A-bar is totally centered before tighten bolts.

