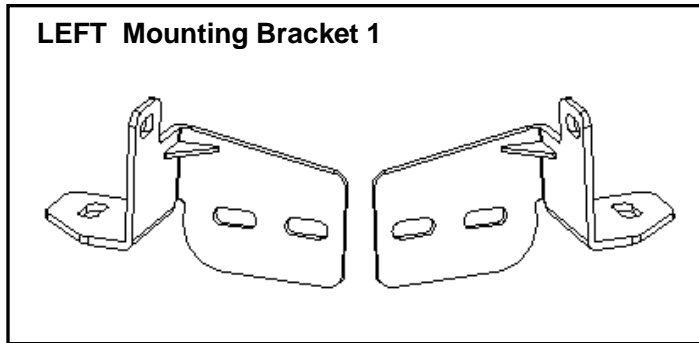




INSTALLATION INSTRUCTIONS

DWTO-772-33-03S

PART LIST:			
QTY	PART DESCRIPTION	QTY	PART DESCRIPTION
1	Bull Bar	4	M10Ø48X10X5) FLAT WASHERS
2	Mounting Bracket1	10	M10(Ø25X10X2) FLAT WASHERS
4	M10-1.75X30 HEX HEAD BOLTS	6	M10 LOCK WASHERS
2	M10-1.75X120 tooth (50)HEX HEAD BOLTS	6	M10 HEX NUT



REMOVE CONTENTS FROM BOX. VERIFY ALL PARTS ARE PRESENT

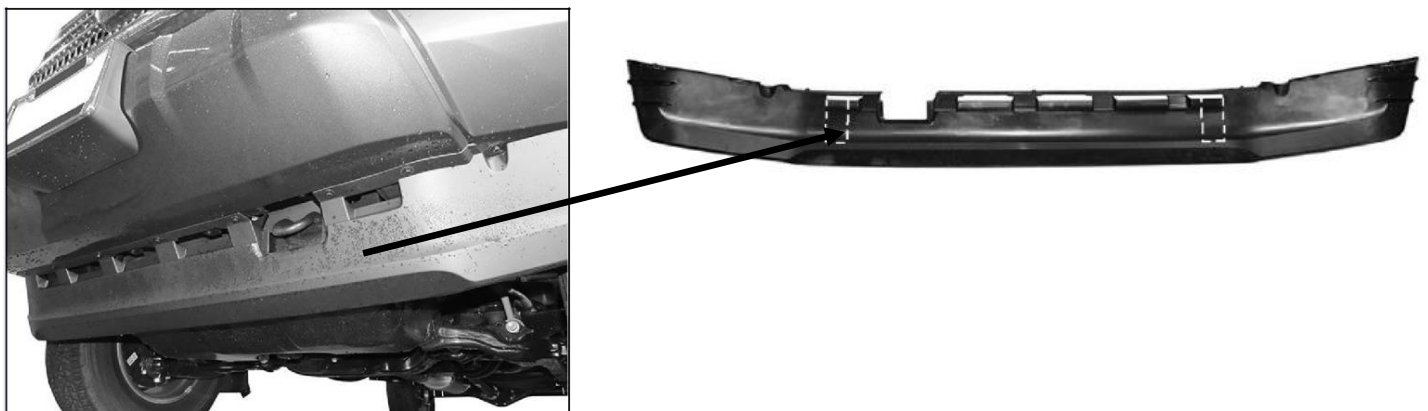
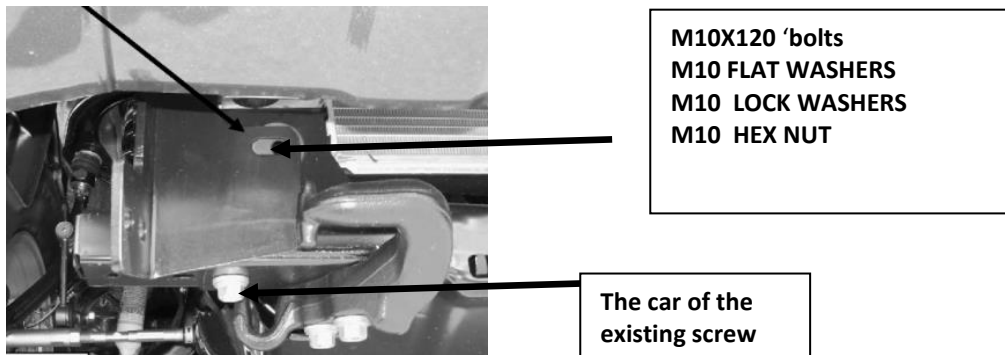
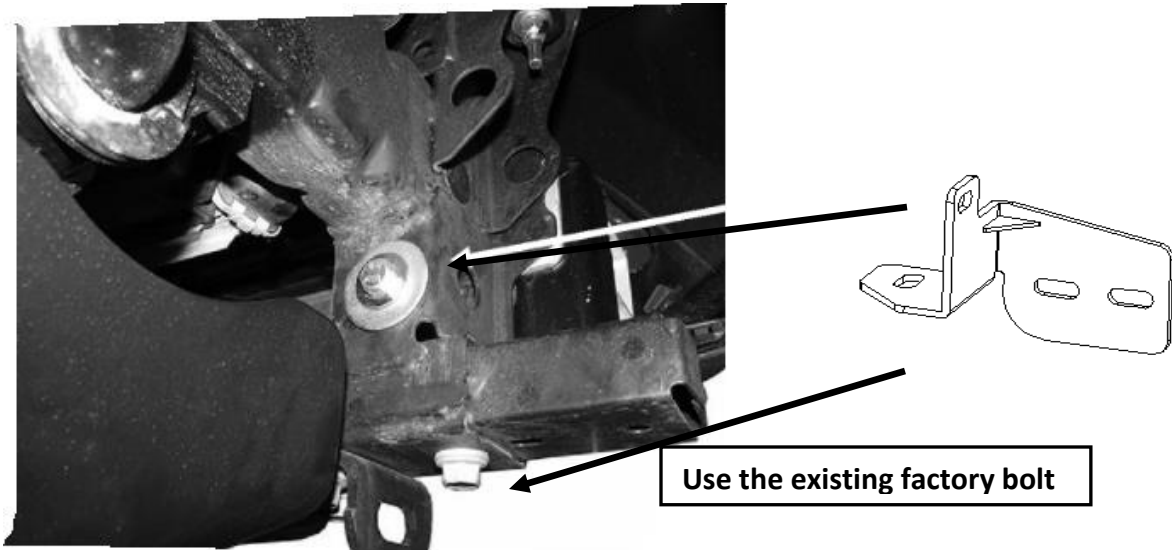
READ INSTRUCTIONS CAREFULLY BEFORE STARTING INSTALLATION

Install Time: 30 – 60 Minutes; Professional Installation

INSTALLATION PROCEDURE

1. Remove air dam from bottom of bumper.
2. Pls prepare the tools for installation, follow as: 12-14、17-19 wrench.
3. Put the mount bracket into the frame of the car, and tighten it with M10X120 hex bolts, the car of the existing screw.
4. With assistance, mount the Bull Bar to the outside of the Mounting Brackets. Use the included (4) M10-1.75mm x 30mm Hex Head Bolts, (8) M10 Flat Washers, (4) M10 Lock Washers and (4) M10 Hex Nuts to attach the Bull Bar to both mounting brackets.
5. Once the Bull Bar is fully mounted on the vehicle, level, adjust and tighten all hardware.
6. Installation is finished.

Do periodic inspections to the installation to ensure all hardware is secure and tight.



Dashed lines represent approximate area to cut from air dam

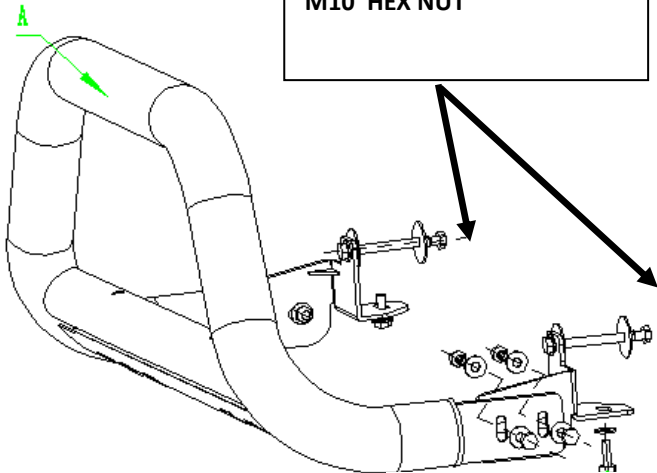


M10X30 HEX HEAD BOLTS
M10 FLAT WASHERS
M10 LOCK WASHERS
M10 HEX NUT



Complete installation

M10X120 bolts
M10 FLAT WASHERS
M10 LOCK WASHERS
M10 HEX NUT



The car of the existing :